

CURTIS CULWELL CENTER

Arena Technical Specifications



Overhead and Rigging

Arena Curtain: Drops from ceiling at mid-floor, dividing arena floor and seating in half.

No Rigging System installed

Client may install own rigging/truss system for lights, video, back drops, etc. at clients cost

There is a 5000 lb limit per rigging point with multiple points over the arena floor (see arena diagram)

Loading Dock

Three (3) exterior Loading Doors:

14' high 12' wide

One with drive up ramp into dock

Two (2) doors into arena from dock

14' high 12' wide

Dressing/Official's Locker Rooms—

Located east side of loading dock area

Men's/women's Shower included

In room clock to show time of day or time remaining on scoreboard clock

Sound System

System controlled via Peavy Media Matrix

Console

Mackie Onyx 16/4 Stereo (runs to a mono system)

Ashley Protea Digital processor

Laptop/Ipod connections

1 CD/Cassette Deck

Assortment of mics-cables-adapters-

(3) Shure SM58 wireless handheld mics

(2) Audio Technica 3000 series headworn mics

Speakers

One (1) EAW KF760 Line array (full house)

with side fill and delay speakers (EAW

MK216) Two (2) EAW MQM1364 Clusters

(half house) with side fill and delay speakers

(EAW MK216) Four (4) EAW SM200 Monitors

Crown CTs amps

Hearing Impaired: Williams Assistive wireless packs

Electric

Loading dock

Two (2) 400 Amp 3 phase

One (1) 200 Amp 3 phase

Vomitory (opposite end of arena)

One (1) 400 Amp 3 phase

One (1) 200 Amp 3 phase

Four (4) in ground boxes on arena floor each with four (4) 20 amp outlets

Multiple 20 amp outlets along wall border of arena floor

Arena Lighting

Full house lighting by overhead metal halide lamps and fluorescents

No significant theatrical lighting available

Soft Goods

Multiple pipe and drape material (10-16 ft tall)

Multiple tables (5/6/8ft) (60"-72" rounds)

Chairs

Music Stands

Instruments for rent

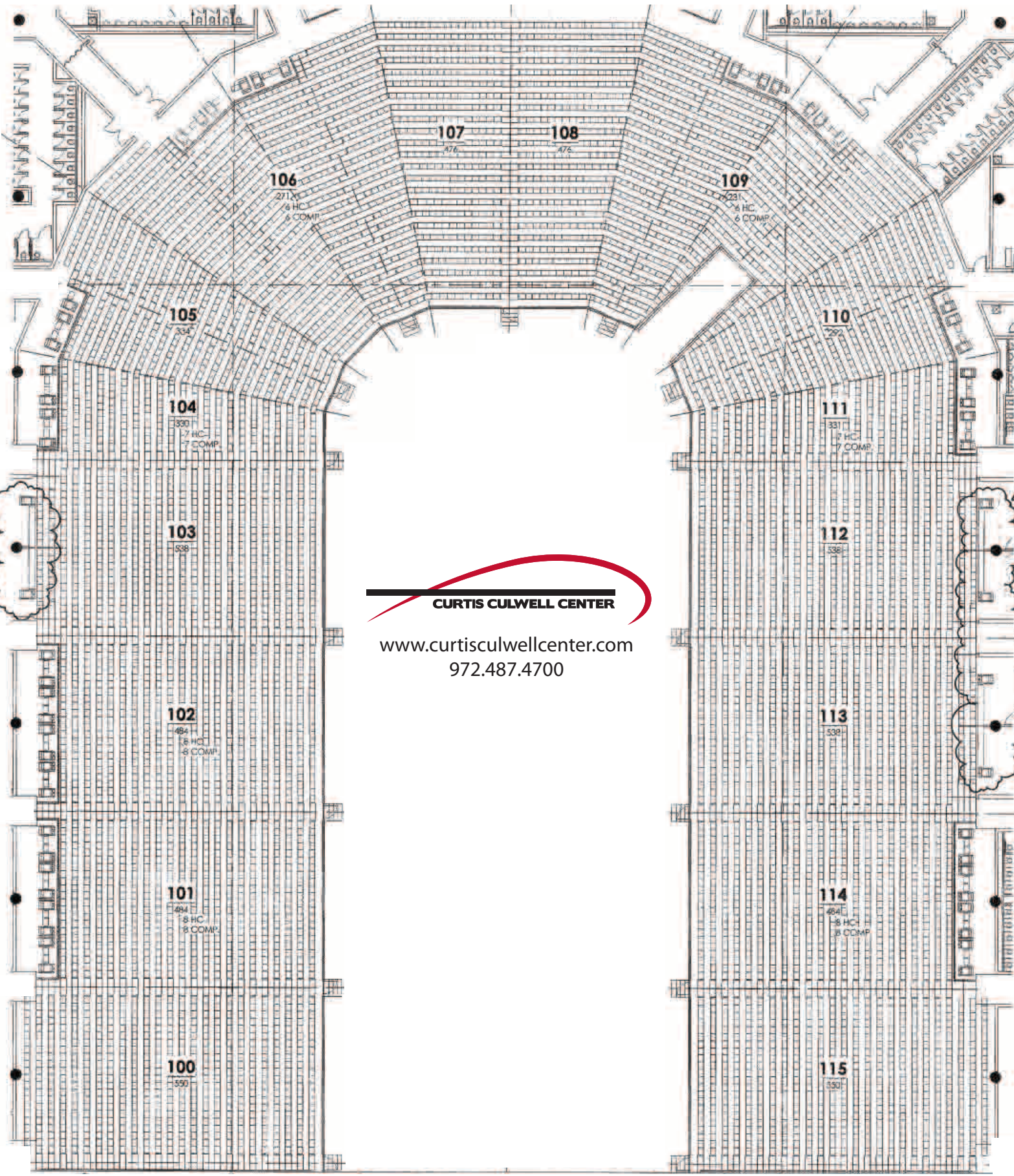
Piano

Bass drum

Kettle drums

Chimes

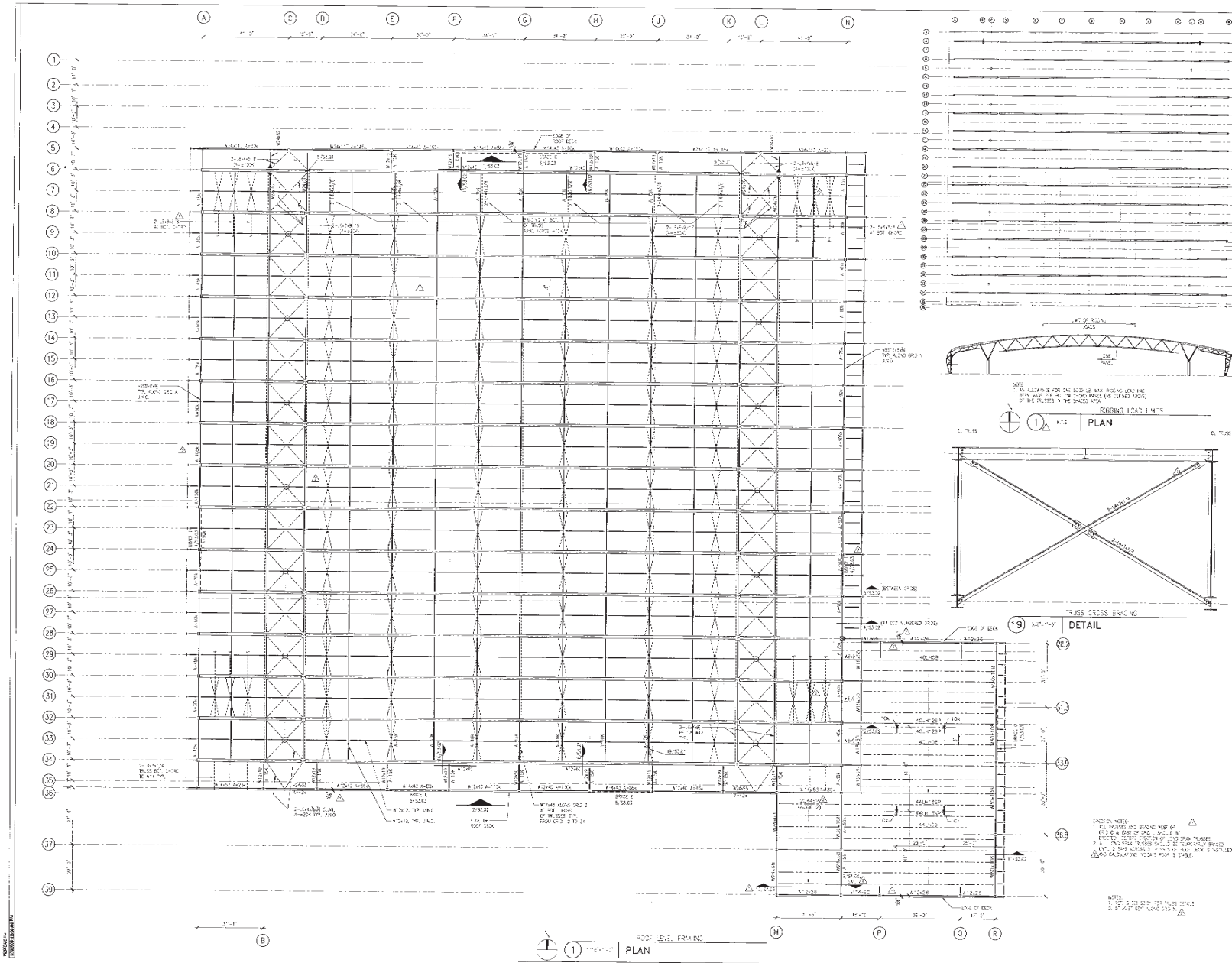
Xylophone



www.curtisculwellcenter.com
972.487.4700



Curtis Culwell Center Roof Grid Diagram



www.curtisculwellcenter.com

972.487.4700